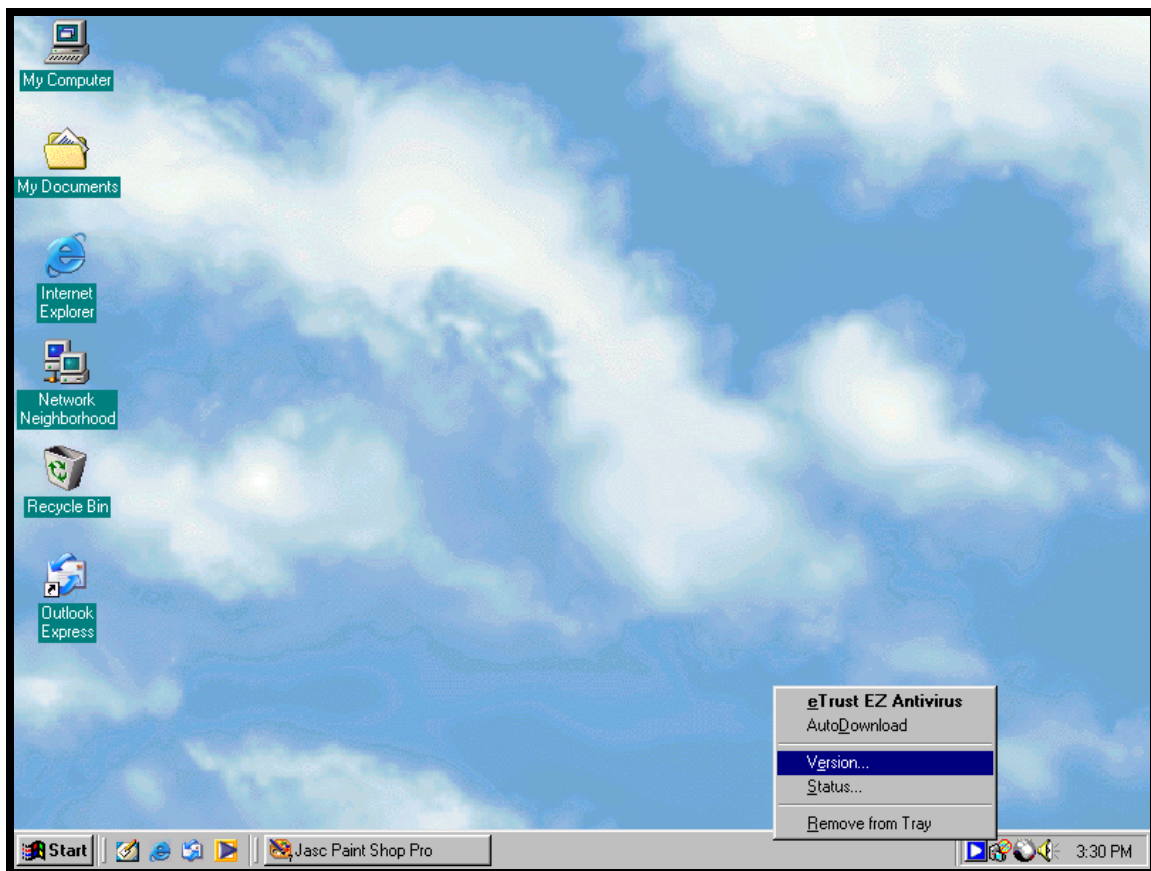


eTrust EZ Antivirus

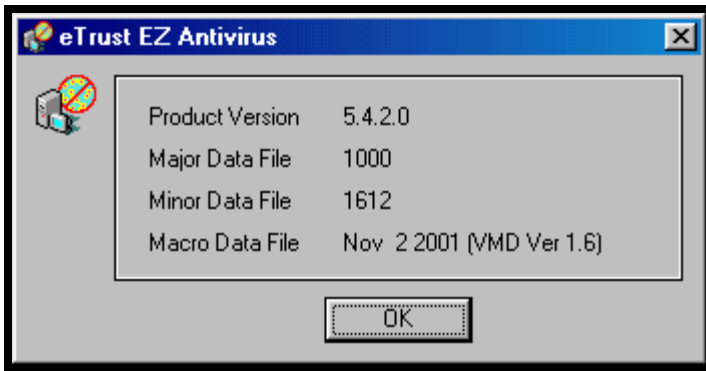
How to verify eTrust EZ Antivirus definitions on workstations

Disclaimer: Maple Tronics computers, Inc. has taken reasonable effort to ensure that the material contained in this document is correct and accurate, however, Maple Tronics Computers, Inc. gives no warranty and accepts no responsibility for the accuracy or completeness of the material. Maple Tronics Computers, Inc. gives no warranty or guarantee that the use of the most current version of EZ Antivirus will protect workstations from receiving a virus, nor does Maple Tronics Computers, Inc. accept the responsibility if a virus should be acquired while using any version of EZ Antivirus.

1. Right-Click on the eTrust EZ Antivirus Icon in the System Tray and select Version.



2. The Macro Data File date is the date of the virus definitions currently running on the workstation.



3. If the Macro Data File date is more than 7 days old please refer to the "How to update virus definitions for eTrust EZ Antivirus " guide and update your definitions within 7 days of the current date.