

ArcServe 2000

How to schedule a backup with ArcServe 2000

Disclaimer: Maple Tronics computers, Inc. has taken reasonable effort to ensure that the material contained in this document is correct and accurate, however, Maple Tronics Computers, Inc. gives no warranty and accepts no responsibility for the accuracy or completeness of the material.

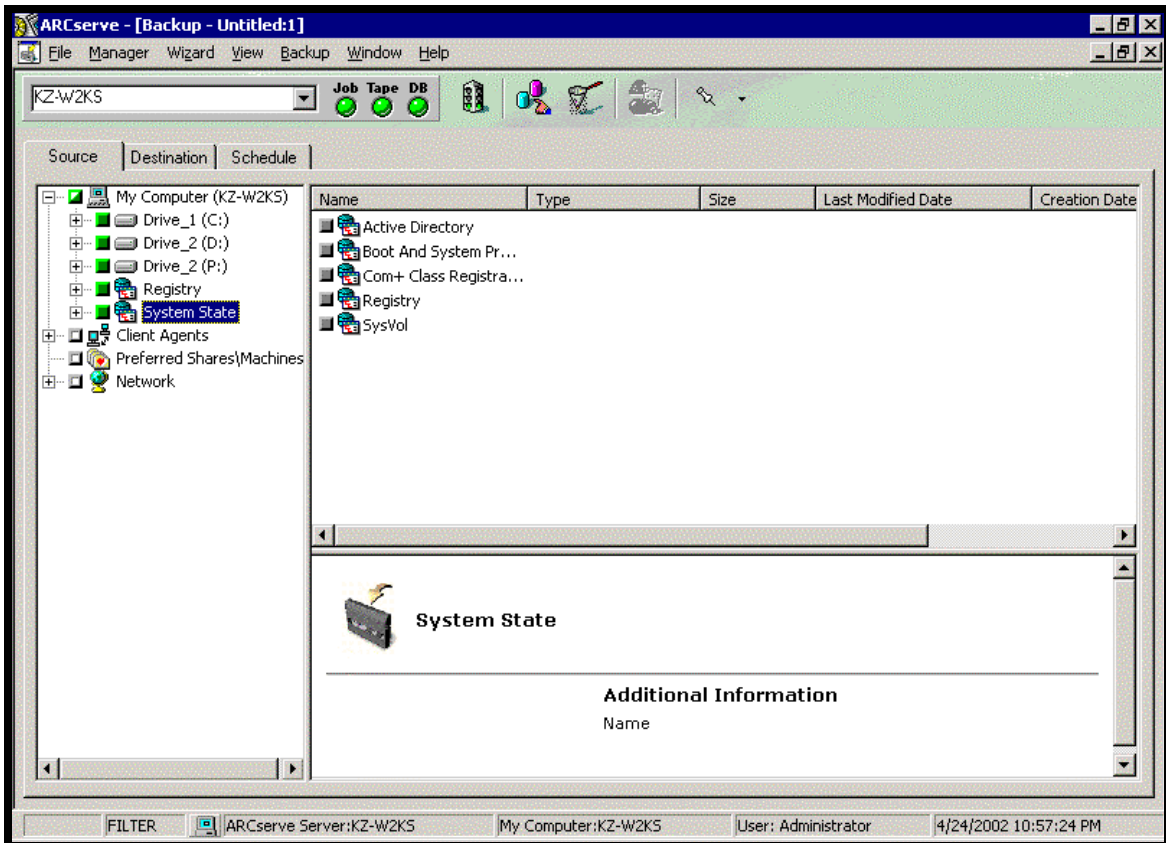
1. Open Arcserve Manager.
2. Click on Quick Access.



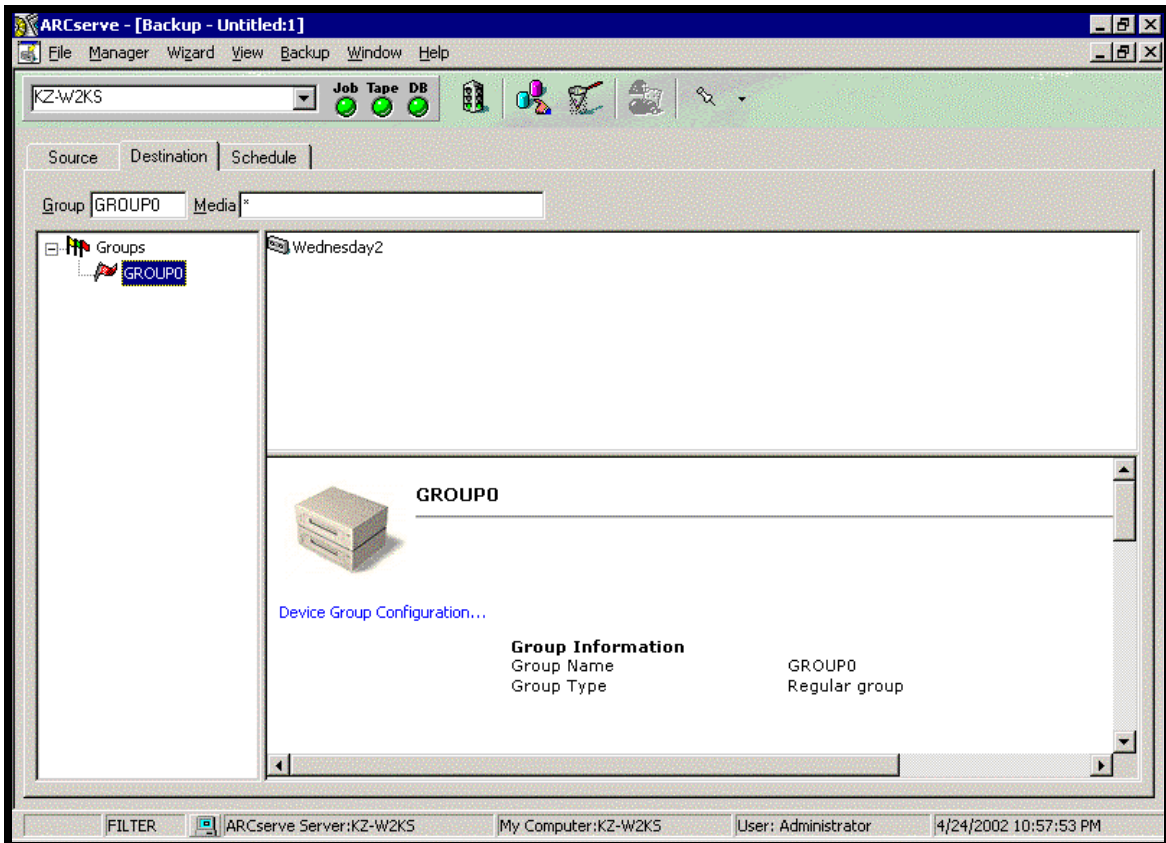
3. Select Backup Manager



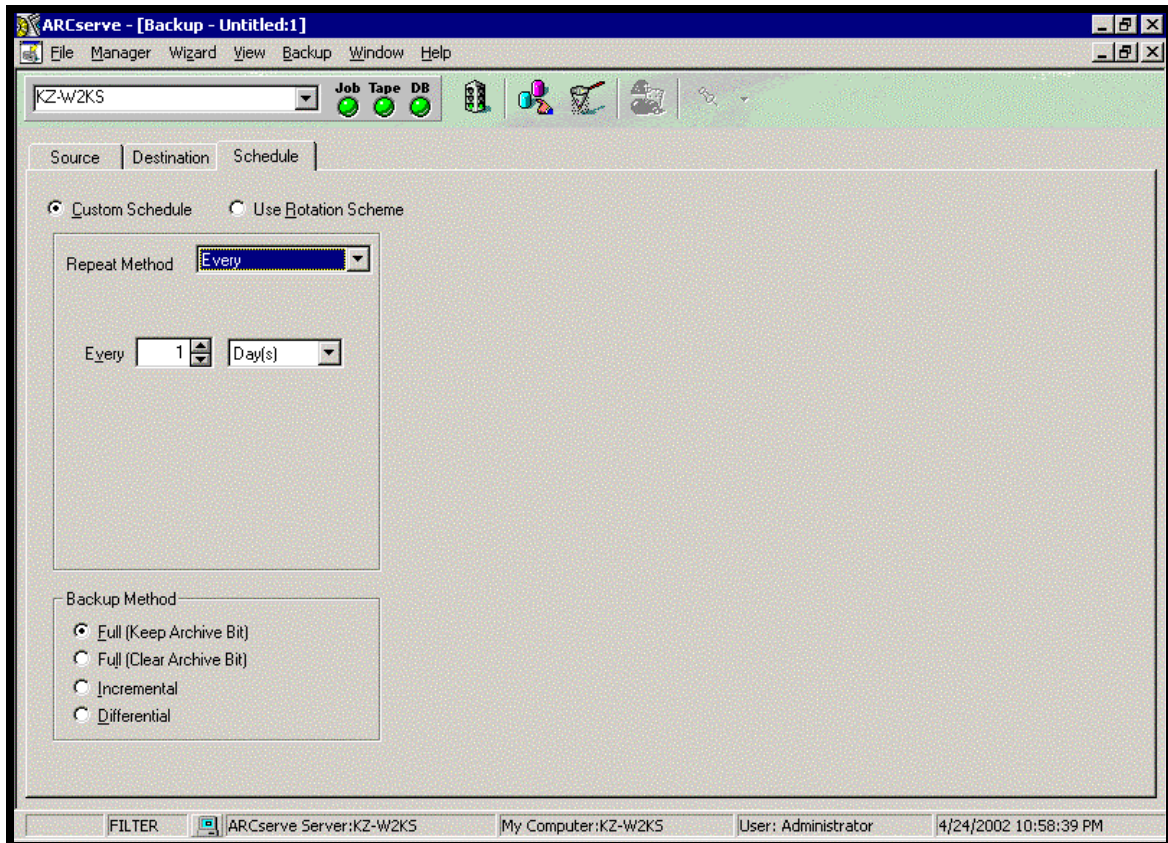
4. Select the source files to backup.



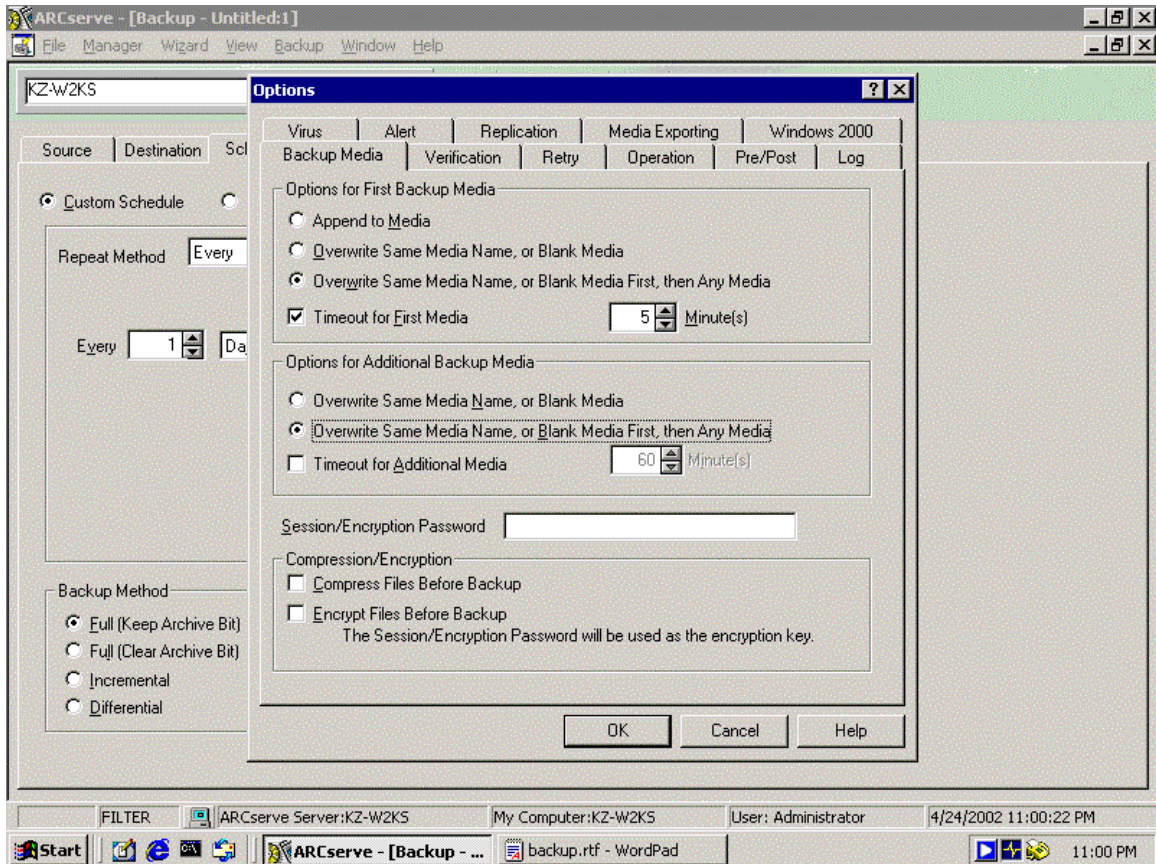
5. In the Destination tab, select the Group where you want the backup to go. In most cases there should be ONLY 1 group.



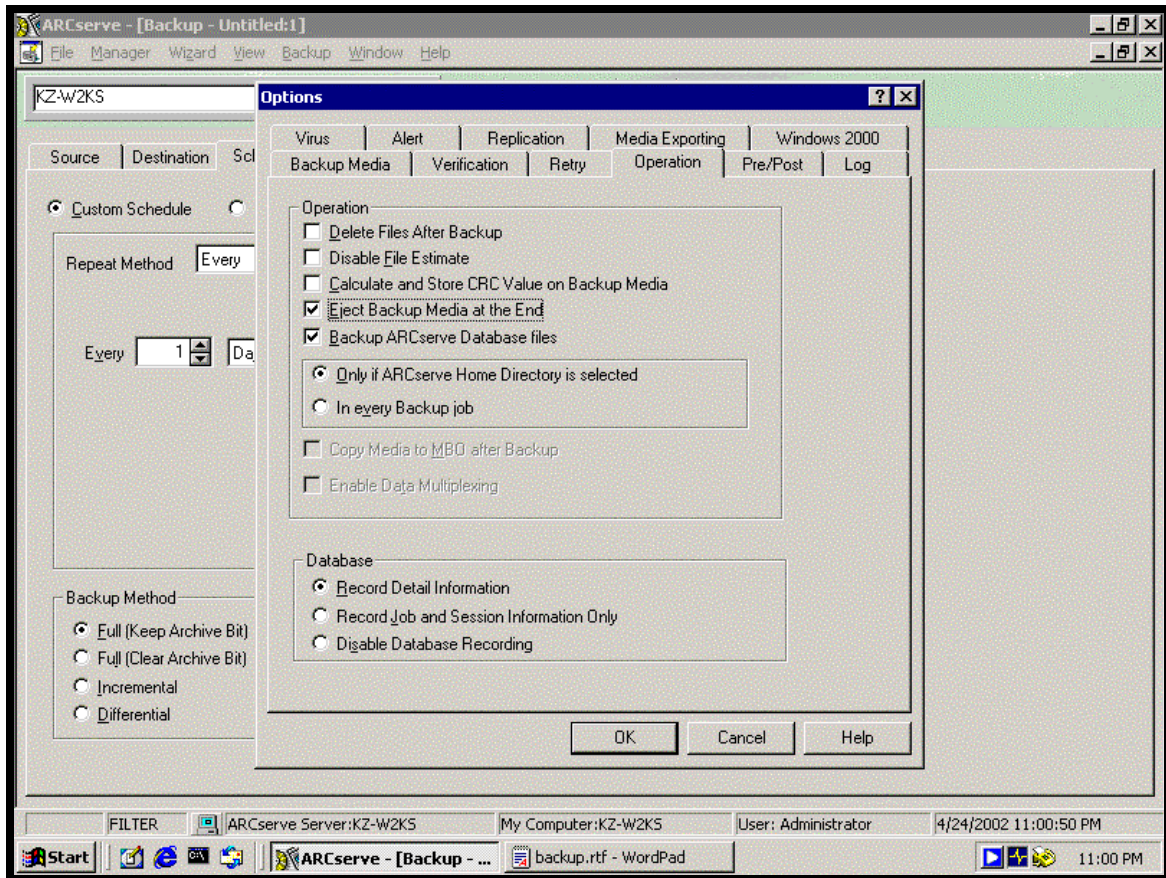
6. In the Schedule tab, set Repeat Method to "Every". At the Every field set the value to 1 Day(s).



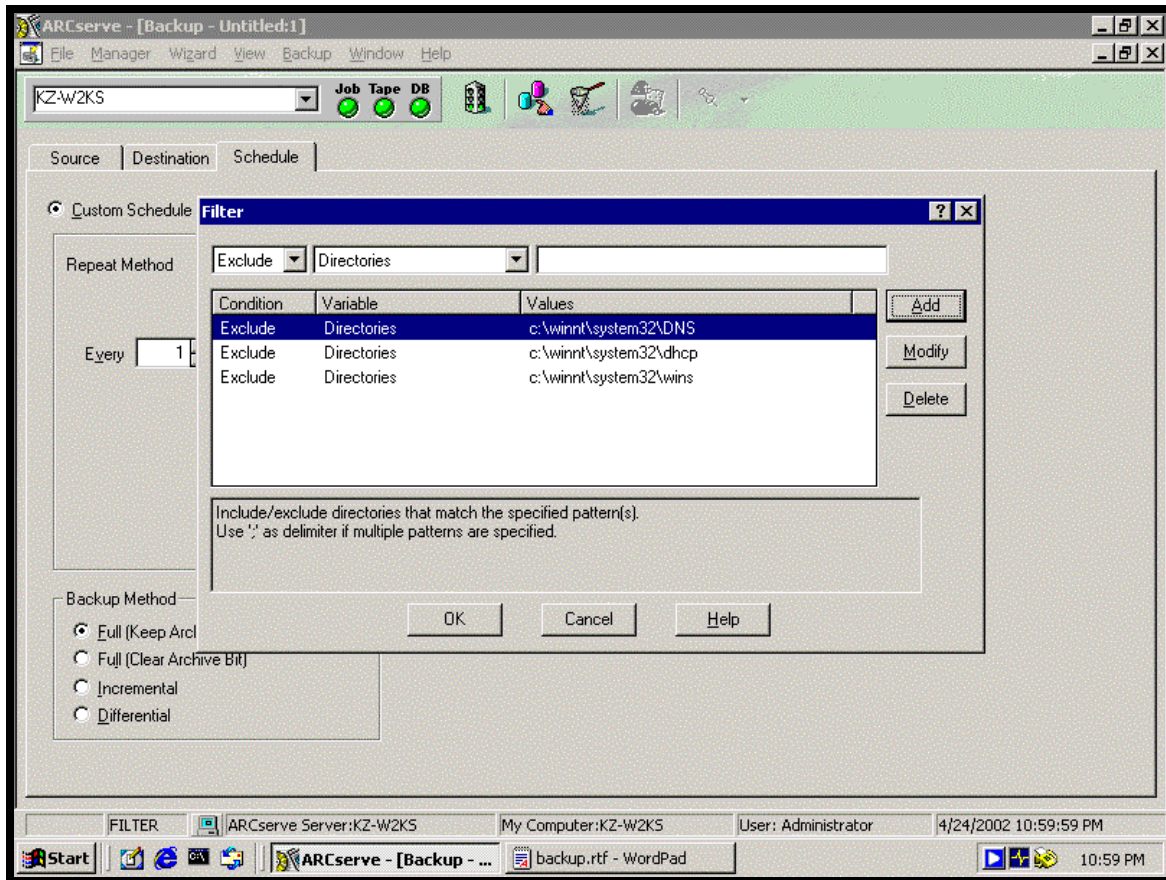
7. Click on Options button (beside traffic light). In the Backup Media tab, under Options for First Backup Media, select "Overwrite Same Media Name, or Blank Media First, then Any Media". Under Options for Additional Backup Media, select "Overwrite Same Media Name, or Blank Media First, then Any Media".



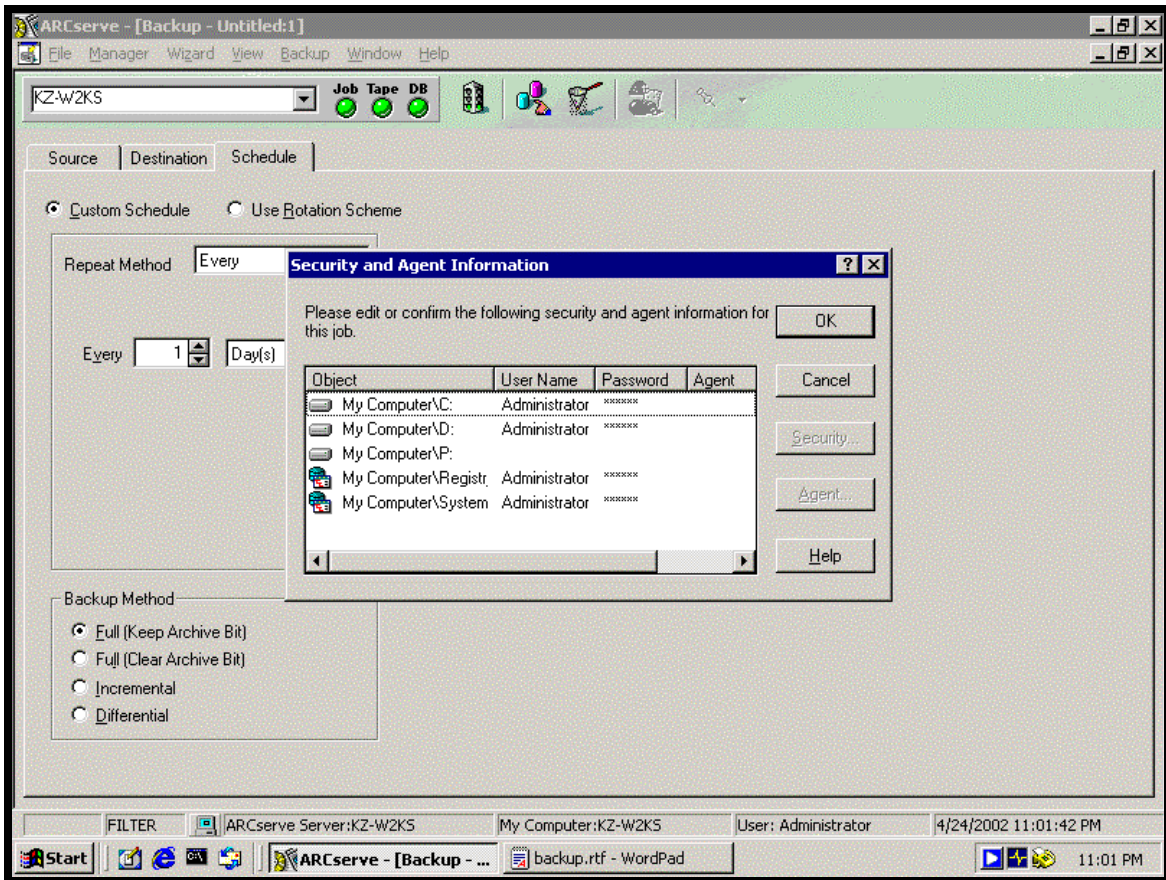
8. In the Operation tab, select Eject Backup Media at the End (unless you have a 40 GB DAT drive in a 14 bay Server case). When finished setting the options click OK.



9. Click the Filter button. Exclude the following directories
 - c:\winnt\system32\dns
 - c:\winnt\system32\dhcp
 - c:\winnt\system32\wins



10. Click on the Run/Schedule button (stoplight). Select all objects in the Security Information window. Hit the Security button and enter the appropriate username and password. Hit OK. Set correct Run On time. Set the Run On date to 1 day prior. Click the Save button and save the backup job in ..\Archived. Name the file DailyBackup.asx. Hit OK.



11. From the main menu go to the Job Status and verify that the job is in the queue.