

Cymphonix Network Composer



The EX Series Network Composer® is the latest Secure Web Gateway from Cymphonix. It is a powerful tool designed to help you control your organization's converged Internet traffic. The EX Series Network Composer marries high-performance, custom hardware with Cymphonix's new 64-bit XLi® operating system. By providing awareness of users, applications and content, Network Composer delivers unmatched visibility and control for your Internet connection. Now you can base performance and security decisions on real-time information from a unified appliance across single or multiple locations.

MISSION CREEP – BUDGET PRESSURE

The growth in connected applications, rich media Web sites, malware threats and evasion techniques make your Internet more critical and more difficult to protect. As organizations look to cloud computing, software-as-a-service and other hosted applications, the challenge is only going to get bigger.

REAL VISIBILITY TO SOLVE REAL PROBLEMS

Securing the Web gateway means staying on top of what's happening to your connection—everywhere and anytime. You can only do this if you have complete visibility into your network traffic. Because of its unique architecture, Network Composer helps you pinpoint problems, analyze data, and create an effective action plan like no other Secure Web Gateway, all from a single appliance.

ARE YOU EXPERIENCING THIS?

- Limited visibility into Internet traffic
- Slow Internet despite adequate bandwidth
- Difficulty enforcing Internet usage policies
- Anonymous proxy sites bypassing URL filter

Experience more control of your Internet connection with Cymphonix.

Discover Everything

Network Composer is powerful enough to sit in-line with your network connection and scan all traffic. It provides deep packet inspection for OSI Layers 3 through 7 with real-time HTTPS scanning—showing you what other Secure Web Gateway solutions miss.

Analyze to Understand

Network Composer provides powerful reporting and analytical tools that correlates and filters data for you. Now you can narrow in on the most granular real-time details or view historical trends for the entire organization.

Act Based on Intelligence

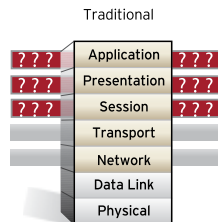
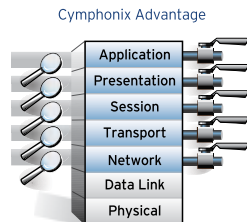
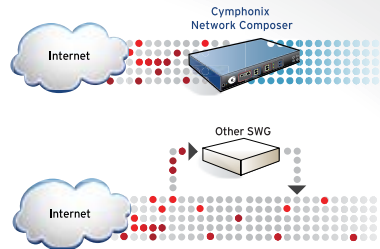
Using the unified, award-winning Network Composer interface makes it easy for you to create powerful, tailored profiles to prioritize and shape traffic, manage permissions and implement organization policies.

See Everything, Control Anything

There are nine Network Composers EX Series base models. All are designed with the processing power and memory to sit in-line with network traffic ranging from 2 Mb/s up to 1 Gb/s. We designed the Cymphonix XLi OS to take full advantage of custom hardware with our **Dynamic Live Reporting Engine, Application Identification Engine, Anonymous Proxy Guard, Content Classification Engine** and **True Cache** technologies. This combination delivers comprehensive monitoring and control of all Internet traffic, outperforming other Secure Web Gateway devices.

PURPOSE BUILT IN-LINE APPLIANCE

Because you can't control what you can't see, Network Composer, when positioned in-line with your Internet connection, is uniquely able to scan all of the traffic going into and out of your organization.



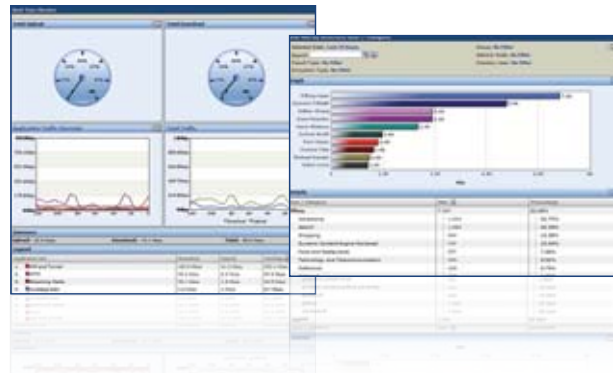
INSPECTION AND CONTROL

Traditional products typically only see and control Layers 3 and 4. Developers have figured this out and can exploit it. Bandwidth intensive applications like iTunes®, Kazaa®, Windows Media Player®, Rhapsody, or BitTorrent can easily bypass this technology. Network Composer monitors Layers 3 through 7 of Internet traffic. Port hopping applications, HTTPS traffic, anonymous proxy methods are caught and flagged by Network Composer.

REPORTING AND POLICY CREATION

Because in-line scanning captures volumes of data, Network Composer's **Dynamic Live Reporting Engine** was designed to let you interpret the data and pinpoint network issues quickly. Start with high-level summary reports and drill down anywhere through the organization to a department or even individual level.

Our unique multi-dimensional policy architecture then lets you create smart rules. You can fine-tune policies with access down to an individual user and time of day. Policies then shift automatically in response to changing network conditions.



REAL TIME REPORTING:

- Total Internet traffic
- Application traffic
- Web browsing by URL, category and user

HISTORIC REPORTING:

- Top Internet users
- Top bandwidth users
- User and group activity
- Application traffic
- URL activity
- Malware activity

REPORT VIEWING:

- View reports through the award-winning interface
- Send regularly scheduled reports via email
- Access on your iPhone®

XLi Operating System

The XLi operating system is the key to Network Composer. XLi comes in two variations: XLi and XLi-E both provide deep packet inspection, filtering and shaping, as well as comprehensive multi-dimensional policy and reporting capabilities.

For larger organizations, XLi-E used in conjunction with Cymphonix Network Conductor, adds critical features like centralized management and reporting, delegated administration, True Cache™, and high availability.

Key Features

Feature	How It Works	Why You Need It	XLi	XLi-E
Network Visibility, Analysis, and Reporting	Reveals and aggregates information on bandwidth, applications, users, and threats. The Dynamic Live Reporting Engine lets you browse network reports on-the-fly.	Single tool to pinpoint network issues quickly. Eliminates need to correlate incomplete sets of data from multiple appliances.	✓	✓
Dynamic Content Control	Shape and prioritize by Internet content category, URL, file type, MIME type, across locations, groups, and users.	High flexibility for enabling and prioritizing traffic. Go beyond simple bit counters or "block and allow."	✓	✓
Dynamic Application Control	Application Identification Engine shapes and prioritizes through Layer 7 for application sets, applications, ports, and protocols across locations, groups, and users.	Increasing number of Web-aware applications drive bandwidth use. By monitoring through Layer 7, all traffic can be seen and managed.	✓	✓
Bandwidth Management	Employ dynamic bandwidth shaping based on the type of traffic and assigned priority.	Management can be done at location, organization, group, and user levels.	✓	✓
Multi-Dimensional Policy Enforcement	Set and enforce Internet use rules and priorities, application access and prioritization, user and group access, bandwidth resource allocation.	The policies are customizable across locations, organization, groups and users from a single policy management interface.	✓	✓
In-Depth Web Content Analysis and Filtering	Content Classification Engine uses multiple tools to identify content: database look-up, URL keyword analysis, real-time content scanning, referring link and daughter link analysis.	Enables defense-in-depth and reduces risk of misses. Real-time HTTPS decrypt/re-encrypt finds malware hidden in secure packets.	✓	✓
Intelligent Filter Avoidance Detection and Protection	Anonymous Proxy Guard™ combines Layer 7 application signatures with dynamic filter avoidance technology detection.	Identifies and stops even the most sophisticated filter bypass techniques.	✓	✓
Malware Detection	Protection against Web-based malware threats with embedded malware detector.	Supports overall defense-in-depth strategy.	✓	✓
Flexible Deployment Configurations	Transparent bridge mode, transparent proxy mode, in-line proxy mode, out-of-line proxy mode, and policy-based routing.	Deploy Network Composer in multiple configurations suitable for a variety of topologies.	✓	✓
True Cache Technology	True Cache technology combines Web caching with continual content analysis to maintain the accuracy of the cached data.	Outperforms traditional static caching solutions. Effective in dynamic Web 2.0 environments.	—	✓
Delegated Administration	Allows access to a subset of the interface for additional administrators based on organizational needs.	Allows reporting/management across locations, groups, and users to facilitate monitoring and administration.	—	✓
High Availability	Supports active/active or active/passive network architectures. Each Network Composer maintains configuration synchronization.	Ensures all traffic rules are automatically synchronized and consistently enforced when deployed with Network Conductor.	—	✓
Centralized Management and Reporting	Use Network Conductor to control from 5 to over 100 Network Composers from a single, award-winning interface.	Enables policy controls and active reports across the entire organization from a single management point.	—	✓

Technical Specifications

Part #	Description	Fiber Options (select one)				SSL Hardware Off-Loading
		Single-Mode	Multi-Mode	Multi-Mode & Bypass	Single-Mode & Bypass	
EX220	2 Mb/s, one copper pair	NA	NA	NA	NA	NA
EX250	5 Mb/s, one copper pair	NA	NA	NA	NA	NA
EX310	10 Mb/s, two copper pairs	Factory	Factory	Factory	Factory	NA
EX320	20 Mb/s, two copper pairs	Factory	Factory	Factory	Factory	Factory
EX350	50 Mb/s, two copper pairs	Factory	Factory	Factory	Factory	Factory
EX410	100 Mb/s, triple copper pairs expansion module	Factory/Field	Factory/Field	Factory/Field	Factory/Field	Factory/Field
EX420	200 Mb/s, triple copper pairs expansion module	Factory/Field	Factory/Field	Factory/Field	Factory/Field	Factory/Field
EX550	500 Mbps, 2U, two copper pairs, dual mini GBIC pairs, redundant power supply and HDDs	Factory/Field	Factory/Field	Factory/Field	Factory/Field	Standard
EX600	1 Gbps, 2U, two copper pairs, dual mini GBIC pairs, redundant power supply and HDDs	Factory/Field	Factory/Field	Factory/Field	Factory/Field	Standard

Options for the EX300 Series and above include single-mode and multi-mode fiber either with or without bypass. Also the EX320 and EX350 Series can be upgraded to include SSL hardware off-loading. The options for the EX300 Series are factory installed **only** and must be specified at the time of order.

The EX400, EX500 and EX600 Series have expansion bays. The cards may be purchased for field upgrade or for integration at Cymphonix. There is no charge for integration.

Professional Services

Cymphonix and our resellers offer services and trainings to support you in ways that meet your unique needs. Whether you are deploying a large, multi-site, international organization or using IT consultants to complement your current IT infrastructure, or installing an appliance yourself, we are here to assist you.

- Robust Training Modules
- Configuration and Installation Consulting
- System Assessment and Optimization Consulting
- 24x7 Premiere Support Package

About Cymphonix

Cymphonix develops Secure Web Gateway solutions that give organizations complete visibility into their networks, enabling them to optimize traffic and eliminate threats. Innovative and award-winning Cymphonix technology addresses issues created by evolving Web sites, Web-based applications, and the growth of cloud computing.

www.cymphonix.com

See for Yourself

See how Cymphonix can improve visibility, security, and efficiency of your Internet connection.



Contact your local technology reseller or Cymphonix for an online demonstration, technical documentation, case studies and pricing. Call 866.511.1155 or send an email to sales@cymphonix.com.